



lexie®

Lexie Hearing Aids Powered by Bose

WAX GUARD
REPLACEMENT GUIDE



We're here to help.



For help,

call (779) 212-7334 and speak
to a Lexie Expert™ or go to
lexiehearing.com/us/support

What you need:



Wax guard replacement tools

+



Hearing aids



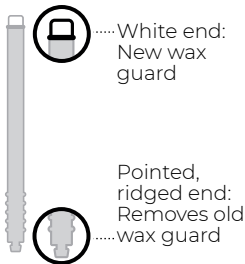
Dome kit
(optional)

Step 1:



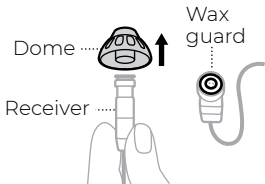
Open the case and
remove one of the tools.

Step 2:



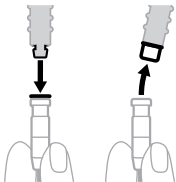
Identify the two ends of the tool.

Step 3:



On one of the hearing aids, firmly pull the dome off of the receiver. The white part under it is the old wax guard.

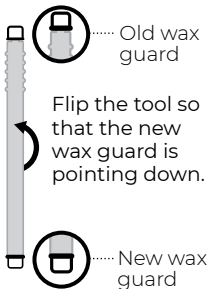
Step 4:



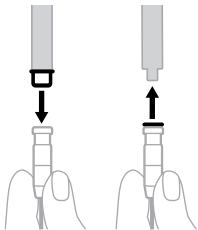
Press the pointed end of the tool into the old wax guard, then pull out to remove.

Note: To prevent damage, don't insert anything into the open receiver underneath.

Step 5:



Step 6:



Fully insert the new wax guard so that it's flush with the top of the receiver, then pull the tool straight out.

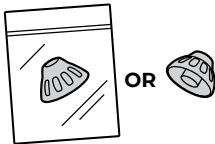
Step 7:



Check that the wax guard is flush with the top of the receiver and not poking out.

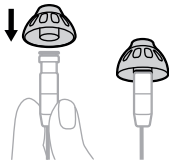
Note: This helps prevent the wax guard from falling off in your ear canal.

Step 8:



Get a dome to put on the receiver. Either choose your size from a dome kit (available separately) or reuse the old dome.

Step 9:



Align the opening of the dome with the receiver and slide the dome onto the receiver.

Step 10:



Gently tug the dome to make sure it's securely fastened.

Note: This helps prevent the dome from falling off in your ear canal.

Step 11:



Repeat steps 1 – 10 for the other hearing aid. When you're done, throw away the used tools and wax guards.



Copyright © 2016-2022
hearX IP (Pty) Ltd.